

Central Sydney Ambulance Station

Footpath works, parking and line-marking changes, Ross Street and Arundel Street

As part of the Central Sydney Ambulance Station, footpath works, local parking and line-marking changes will be implemented on Ross Street and Arundel Street, Forest Lodge from early August 2023.

These works will involve construction of the ambulance station driveways, footpath and kerb reinstatement, vegetation works, changes to parking signage and new line-marking on the road.

Construction of the ambulance station expected to be completed by late 2023 with the station going live after a period of testing and operational commissioning by NSW Ambulance.

Upcoming activities

The following activities are planned:

- construction of the ambulance station driveways
- footpath and kerb reinstatement
- changes to parking signage
- new line-marking on the road
- vegetation works.

General construction activities may include concrete breaking, minor excavation, concreting, movement of trucks and equipment and traffic control.

Access to private property will be maintained throughout the works.

Pedestrian detours may be in place during the works.

For your safety and the safety of our workers, please always follow the direction of traffic controllers.

How will the work affect you?

All construction activities are carried out with the health and safety of the local community as our top priority.

We endeavour to keep noise, dust and vibration to a minimum.

We manage impacts by:

- planning work effectively
- scheduling respite periods during high-level noise activities
- turning off machinery and vehicles when not in use.

Traffic and parking changes

Permanent local traffic and parking changes will be implemented during upcoming work.

These changes will:

- support emergency vehicles accessing Parramatta Road without delay
- manage on-street parking demands for residents in the local area

These changes have been approved by City of Sydney and Transport for NSW and follow recent line-marking works by Transport for NSW in Ross Street.

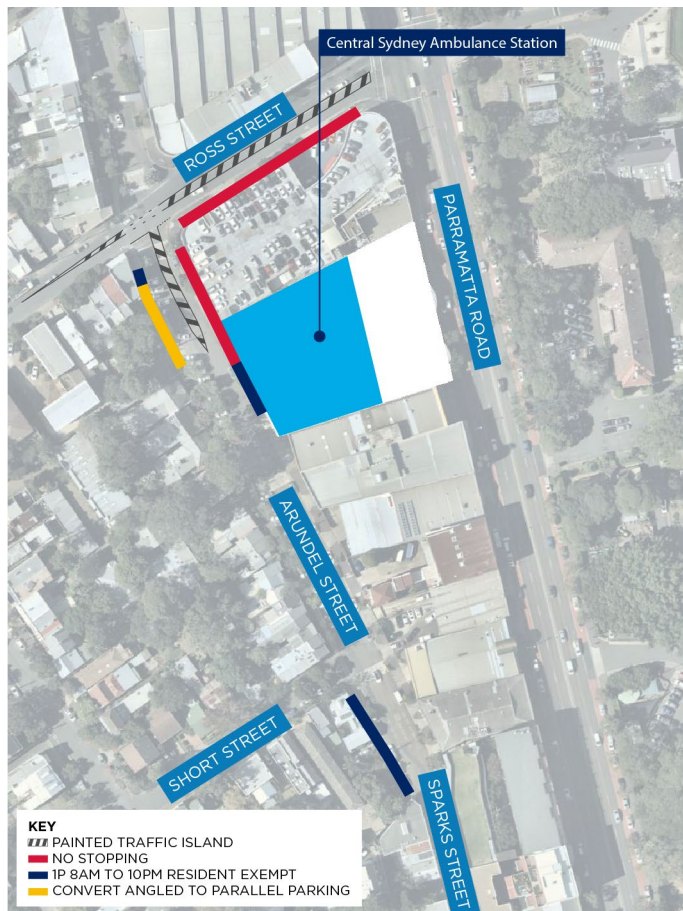
Changes in Ross Street

- Implement 'No Stopping' signage on Ross Street westbound from Parramatta Road to Ross Street (currently signed 'No Parking')

Changes in Arundel Street

- Line marking a traffic island from the ambulance station to the intersection with Ross Street
- Implement 'No Stopping' signage in front of the ambulance station
- Extend the '1P 8am to 10pm resident exempt' parking signage north and convert a section of the angled parking to parallel parking
- Implement '1P 8am to 10pm resident exempt' signage on the western kerb of Ross Street between Sparks Street and Short Street (currently unregulated parking).

Map of line-marking and parking signage changes



About the Central Sydney Ambulance Station

The new Central Sydney Ambulance Station at 50 Arundel Street is being delivered on the site of the former NSW Coroners Court in Forest Lodge.

This site was carefully chosen for its proximity to local communities and major roads to ensure paramedics are best placed to respond to medical emergencies as quickly as possible.

The new ambulance station will accommodate projected growth in Sydney for emergency and mobile care and includes:

- Dedicated space for 30 ambulance vehicles and 3 motorcycles
- Offices for administration and communications
- Functional areas for vehicle restocking, cleaning and maintenance
- On-site parking for staff, and
- Amenities including kitchen and bathroom facilities with dedicated space for staff on a break.

The Central Sydney Ambulance Station is being delivered as part of the NSW Government's \$184 million Sydney Ambulance Metropolitan Infrastructure Strategy (SAMIS) program reshaping NSW Ambulance's operations in metropolitan Sydney.

Keeping you informed

If you would like to speak with a member of the project team directly, you can call us on our project information line during business hours on **9978 5933** or email us at HI-centralsuperstation@health.nsw.gov.au

Thank you for your patience while we complete this important project for the local community.



For more information visit our website: www.ambulancesuperstations.health.nsw.gov.au